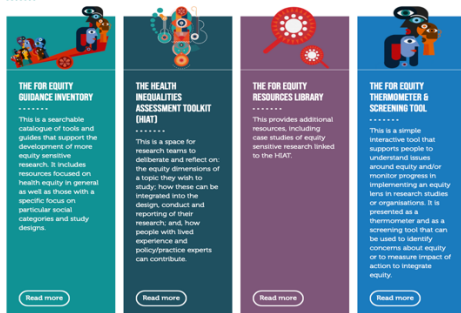


## Introducing the FOR Equity Website

[FOR EQUITY](#), short for *Focus On Research and Equity*, provides web-based tools and resources to help make research evidence more relevant for action to reduce social and health inequalities. It is funded by the National Institute for Health Research [School for Public Health Research](#) and [ARC North West Coast](#). It includes four elements.

FOR EQUITY RESOURCES ARE DESIGNED TO HELP RESEARCHERS INTEGRATE AN INTERSECTIONAL EQUITY LENS INTO THEIR STUDIES



[The Health Inequalities Assessment Tool \(HIAT\)](#) aims to support people to integrate an intersectional equity lens into research and consider how people with lived experience and policy or practice expertise can help in this process. You can move backwards and forwards between five sections as research ideas develop. To encourage researchers to *Reflect, Involve and Dive Deeper* there are a series of questions and useful information and examples for each section of the HIAT.

The [Guidance Inventory](#) contains other published tools or guides aiming to strengthen the equity focus of research. These were identified through academic databases and grey literature published in English. Topic experts were also consulted. The Inventory can be searched by study design or methods (e.g. systematic reviews, randomised control trials, qualitative, quantitative and mixed methods research), by type of data source (e.g. primary or secondary data) or by the different dimensions of equity (e.g. social class, ethnicity, gender).

The [Resources Library](#) contains case studies linked to the HIAT. These illustrate how researchers have sought to integrate an equity focus into their work. Other general resources cover a range of issues involved in developing, delivering and disseminating research sensitive to inequalities.

The [FOR EQUITY Thermometer and Screening Tool](#) aims to support individuals or organisations to assess current equity sensitivity, monitor progress and communicate their equity journey to others.

We hope FOR Equity is useful. Please use our [Contact Us form](#) to make suggestions for improvements to ensure the resource becomes more comprehensive over time.