

**NIHR** | Applied Research Collaboration  
North West Coast

**Welcome to ARCFEST**

**12 September 2023**



# Welcome

**Professor Mark Gabbay**  
**Director**

**Applied Research Collaboration**  
**North West Coast**



# Housekeeping

- Timings, rooms and breaks
- Access to toilets
- Prayer room
- Fire procedures
- Do explore the grounds!



## Aim of today:

- Attendees to utilise our collaborative expertise in the RaCES workshop to help solve service issues / gather evidence
- Attendees to gain an insight into the CoREN and opportunities it presents to tackle existing issues for members
- Our work with colleagues in Health Determinants Research Collaborations (HDRCs) + Public Health Intervention Responsive Studies Teams (PHIRST)
- Network with our themes during breaks on current research projects and catch up with our staff



# Progress summary (1)

- Our RaCES programme is helping solve member issues and leading to presentation of evidence and changes in services
- The COmmunity Research and Engagement Network (COREN) is a platform for members to share their knowledge and expertise and learn from each other to support the development, dissemination, and implementation of health and social care research. Workshop today and we encourage members to use it!
- We are continuing to help build research capacity in member organisations with 37 Internships



## Progress summary (2)

- Very good publication numbers (275 + 58 in press)
- Pleasing grant income figures (44m+)
- 58 members with additional applications pending
- Progress made on key ARC NWC projects in themes (100+)
- ARC NWC part of cutting edge initiatives (e.g. Virtual Wards)
- ForEquity/ PLDR / RaCES are all out there and being utilised
- International links with Universities for sharing research
- Assisting with development of new Dementia Inequalities Game – available at <https://liverpooledementiaageingresearchforum.co.uk/dementia-inequalities-game/>





## Progress summary (3)

- 100+ Public Advisers now registered with ARC NWC
- 30+ PhD students funded by ARC NWC across Member Universities
- Increase in general public engaged and informed about our work
- Increase in traffic to our website and navigating theme pages
- Working with members on 3 new bids for Health Determinants Research Collaborations (HDRCs)
- Continuing to work with Integrated Care Boards on their regional Research & Development strategies
- Joined new national dementia policy research unit to produce research on prevention, diagnosis and treatment, care service, and workforce needs.
- Our Seldom Heard forums continue to engage with hard to reach communities



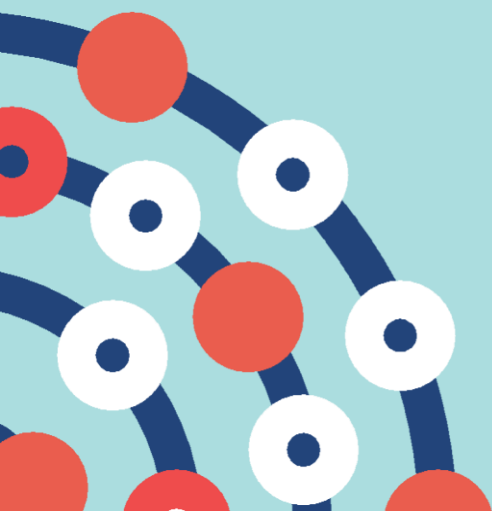
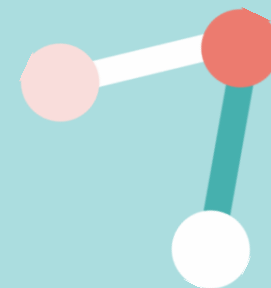
## Current challenges:

- Finalising ALL Membership contracts in time for new business plan/securing co-funding commitments 2024-26
- Finalising online index of ARC NWC projects and their status
- Member Engagement – immense service pressures on health and care organisations but progress made
- New Business plan implementation.....

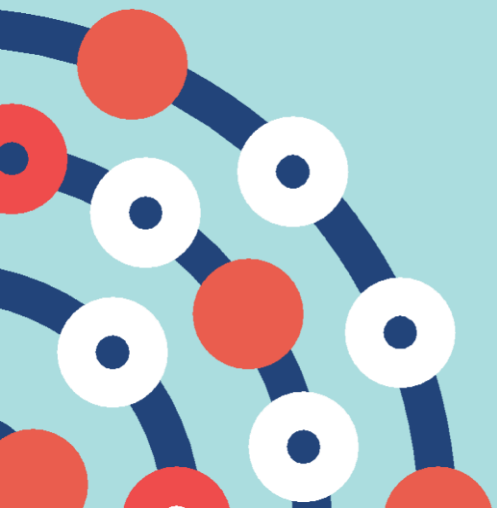
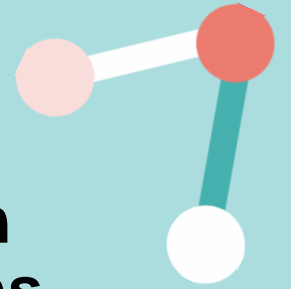




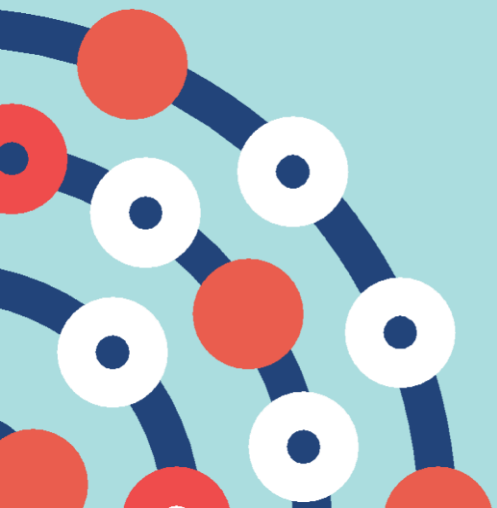
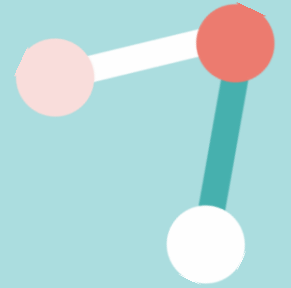
# ARC-NWC Extension Business plan update



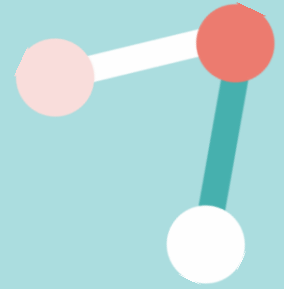
- **NIHR have invited all ARCs to submit a business plan for an extension of current ARC funding for 18 months from September 2024 – March 2026**
- The costed extension will allow ARCs to further expand on their work programme and agreed themes and objectives.
- The form acknowledges changes to the research landscape as a result of the Covid-19 outbreak and invite ARCs to review their themes and assess whether the agreed objectives remain appropriate and/or achievable.



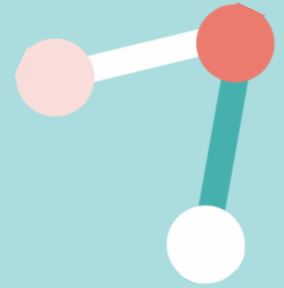
- **May – June Initial consultation with themes**
- June ARC fest consultation with members and other stakeholders
- July – August redrafting
- September – final drafts and submission to ICB
- October – submission to NIHR



- **Overall strategy and objectives**– No major change, additional emphasis on impact
- **HACAL** – slight restructure of sub-themes, emphasis on building on strengths in older people, developing children and young people, integration of cross-generational sub-theme
- **EPHC** - further developing place-based approach, case studies including air-quality, digital health, social prescribing
- **PCCC** – ongoing capacity building and grant development support in three sub themes of: continuity of care, multimorbidity and digital healthcare
- **IPH** – develop Economies for Healthier Lives and System P. Additional work in: Evaluating public health approaches to reducing secondary care demand; dental public health



- **MIDAS** – continuing to provide a range of methodological support and guidance to ARC NWC member organisations and colleagues, expand RACES activity, including more social care services, review methodological subgroups
- **CHI** – continuing to support research and implementation in the NWC through better integration of data sources and infrastructure
- **ACD** – continuation and evaluation of the internships programme
- **IMPACT** – expansion of roundtables infrastructure to include social care and children and young people, ongoing implementation support and collaboration on national priority programmes
- **PCIEP** – Strengthen monitoring and ongoing evaluation of PCIEP activity, Evaluation and further embedding of CoREN across the collaboration



- **The steering group is invited to consider the business plan highlights and to make any suggestions or comments on how the business plan can be improved and/or how its delivery may best be supported**
- The programme team is working to affirm the continued in-kind support of members before submission
- We have the opportunity to make refinements and amends before MTM 19<sup>th</sup> September
- Submission to ICB 20<sup>th</sup> September
- Submission to NIHR 4<sup>th</sup> October



# Recent Member engagement – want us to visit?

Mersey Care NHS FT reposted  
**Mental Health Research for Innovation Centre**  
 @MentalHealthRIC

Prof Mark Gabbay is at the @Mersey\_Care Service Evaluation Showcase providing an overview of @arc\_nwc and the opportunities to further a career in research. He is joined by Advanced Physiotherapist Navakanth Rajulapati who is sharing his internship experience. @LivUnilPH

11:10 AM · Sep 5, 2023 · 491 Views

**Bridgewater Community Healthcare NHS Foundation Trust staff are furthering their careers in research after being awarded internships**

**A passport to success for improving the detection and reporting of adverse drug reactions**

BY ANITA HANSON, RESEARCH MATRON AND LEAD RESEARCH NURSE FOR CLINICAL PHARMACOLOGY AT LIVERPOOL UNIVERSITY HOSPITALS NHS FOUNDATION TRUST (LUHFT) AND THE UNIVERSITY OF LIVERPOOL.

arcnwc@liverpool.ac.uk

**NWAS Research & Development**  
 @NWAmb\_Research

Well done to Michelle @NWAmbulance for completing the Data Science Internship @arc\_nwc

Her project looked at the care provided to end-of-life patients by paramedics across the North West to identify inequalities and help tackle them

Find out more at [bit.ly/45DyVb3](https://bit.ly/45DyVb3)

michelle barlow and 6 others

4:05 PM · Aug 22, 2023 · 2,268 Views

**WHH RD&I** @WHHResearchTeam · 2h

The @NIHRCRN\_nwcoast Research Bus is officially launched & ready for action! @WHHNHS will welcome the bus for Your Career Journey event on 24/10. Sign up and chat with us. @arc\_nwc @innovationnw & @NIHRCRN\_nwcoast to see if research is for you! Scan QR code/email for more info.

WHH AHPs and 4 others

Please visit our online calendar  
<https://arc-nwc.nihr.ac.uk/events/month/>

to keep up to date with our theme meetings / events / Research Development Networks etc

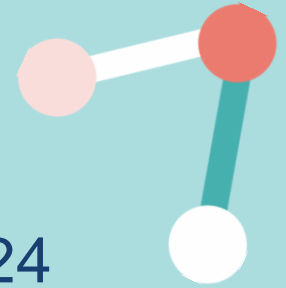
Tell us about your event!

[arcnwc@liverpool.ac.uk](mailto:arcnwc@liverpool.ac.uk)



NIHR Applied Research Collaboration North West Coast							About	Latest Updates	Get Involved	Resources	Contact	Members Area
11	12 ARCFEST	13 Equity Lens podca... Staff Away Day	14 10:00 am - 12:30 pm Webinar: Supporting patients experiencing poverty-related mental distress 12:00 pm - 2:00 pm NWC Seaside Towns and Communities RDN	15	16	17 RaCES and Fello...						
18	19	20	21	22	23	24						
25	26	27 1:00 pm - 2:00 pm Joining community insight with academic research – a case study 2:00 pm - 4:00 pm Digital Health Research Development Network	28 2:00 pm - 3:00 pm Social and Community Mental Health and Wellbeing RDN meeting	29	30	1						

# Opportunities & Deadlines



Fellowships funded by the NIHR - deadline 17/9/23 and 14/1/24

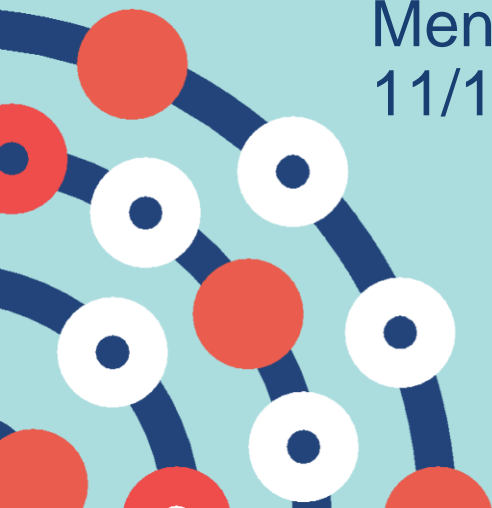
RaCES Internships – 17/9/23

Research Project Interns (from Members) – 14/1/24

Mental Health Early Career Researcher Development Fellowships – 11/12/23

Further information on all at: <https://arc-nwc.nihr.ac.uk/impact/>

arcnwc@uclan.ac.uk for more information speak to our staff today!



# How much of an Impact are making an at the point of service delivery?

*Implementing our new Impact plan developed with Matter of Focus and a new system to capture evidence*

*We need co-operation from the collaboration on data collection, new ways to capture impact and dissemination*

*Initial discussions at Staff Away day tomorrow!  
We already know its happening, but scope and reality of value needs to be defined?*





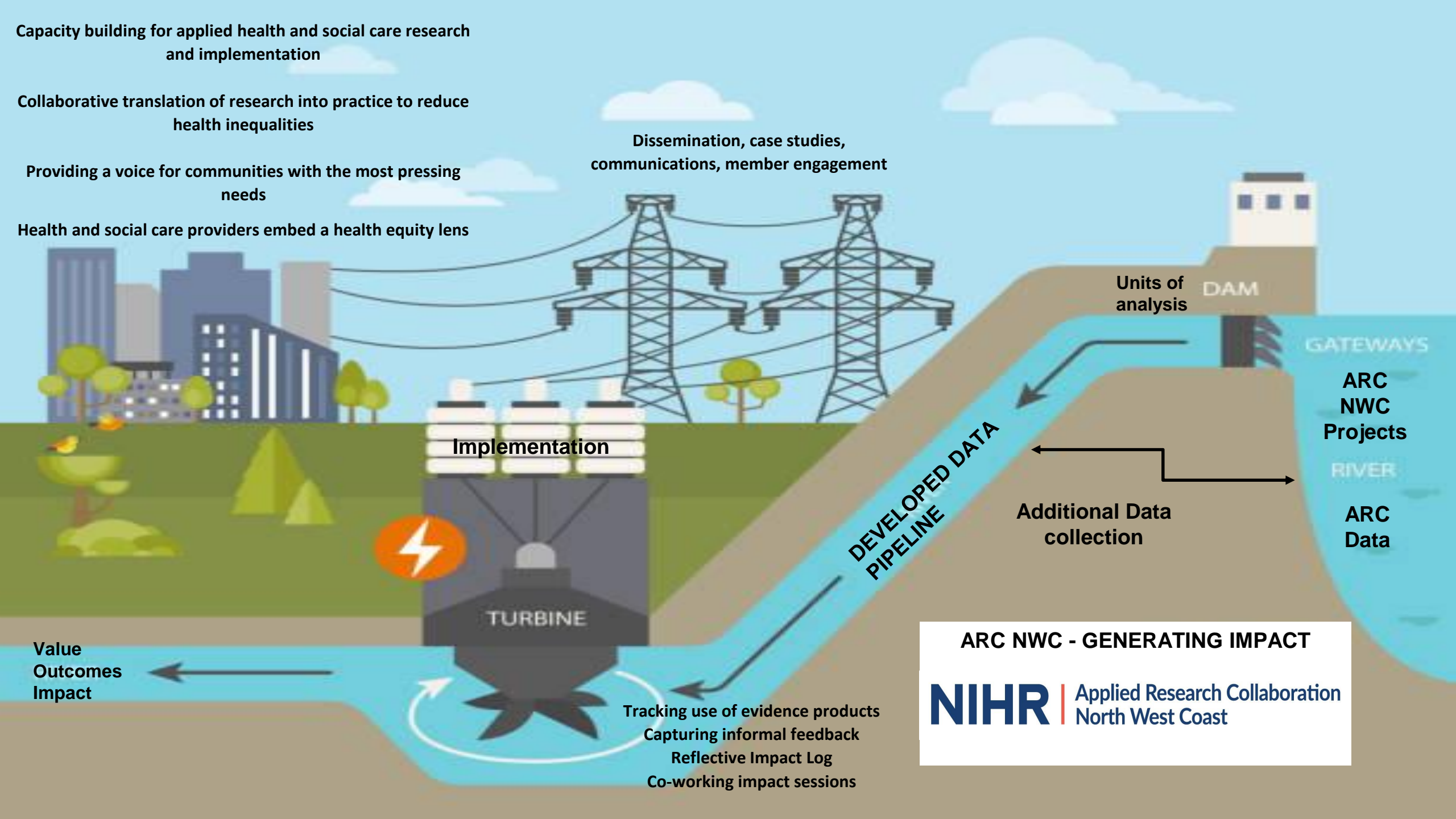
Capacity building for applied health and social care research and implementation

Collaborative translation of research into practice to reduce health inequalities

Providing a voice for communities with the most pressing needs

Health and social care providers embed a health equity lens

Dissemination, case studies, communications, member engagement



**ARC NWC - GENERATING IMPACT**

**NIHR** | Applied Research Collaboration North West Coast



**Thank you – enjoy the day**

