

# Does Dynamic Support Database identify early risk of placement breakdown in adults with learning disability? Perceptions of service users, carers and professionals

Navakanth Rajulapati – NIHR Research Intern, Advanced Physiotherapist [navakanth.rajulapati@merseycare.nhs.uk](mailto:navakanth.rajulapati@merseycare.nhs.uk) 01925 664444  
Supervisor: Dr Kathryn Berzins

## Background

There were 2000 in-patient learning disability admissions to Assessment & treatment units in England in April 2022, over half resulted in an average length of stay of over 2yrs (NHS Digital, 2022). Risk of placement breakdown is one reasons for admission and most could be avoided if the risk of placement breakdown is identified early and support provided in the community. **Dynamic Support Database (DSD)** is a clinical support tool to identify risk of admission and structure additional support. Warrington community Learning disability team has been implementing DSD process for the past few years. No evaluation has taken place to date.

## Study aim and design

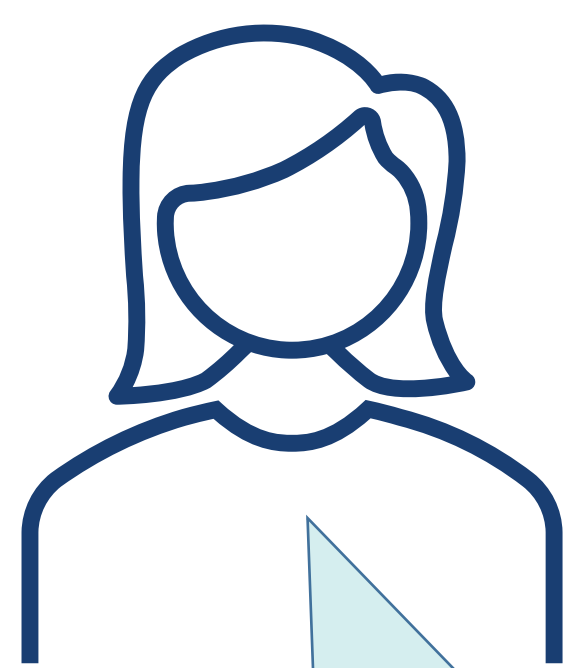
This service evaluation aimed to evaluate whether DSD identifies early risk of placement breakdown in adults with learning disability. It used qualitative semi-structured interviews. Purposive sampling was used to ensure experience of DSD. Sample (N = 14) Service users = 4; Carers = 5; and Professionals = 5. Data collection via face-to-face interviews, recorded and transcribed. Normalisation Process Theory (NPT) was used to analyse the data. Favourable ethical review was given by UCLan Ethics committee and Mersey Care NHS Foundation Trust.

Project PPI included carers of people who had been on DSD

People with learning disabilities experience a number of health inequalities including worse mental and physical health

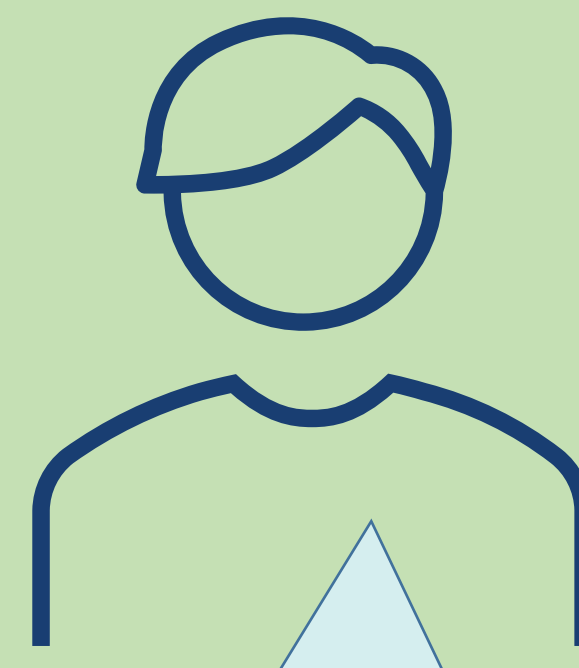
## Findings

### Professional



...when we pick people up, we may say they may be green or amber. The team here knows service users very well, are quite good at picking up the subtle signs. If we can get in there quickly, we can do something...

### Service user



They come round to have a chat with me to see how I am doing because I get stressed a lot. The LD nurses did help me.

### Carer



Oh, yeah definitely. DSD extra support from LD team makes a massive difference to people. It's really beneficial because without the LD team, we probably wouldn't have this service going.

Most participants reported that DSD has identified early risk of placement breakdown. Subsequent intensive support has helped prevent unnecessary admissions. Carers and service users felt they need more information about DSD prior to being placed on DSD. NPT Context-Mechanisms-Outcome frame work and constructs like strategic intentions, collective participation and sustainment were used to analyse the data.

## Initial conclusions

DSD with intensive support has been successful in preventing unnecessary admissions. A key part for its effective lies in collective MDT decisions, collaborative working with care providers, commissioners and social care. More awareness of DSD in carers, social care professionals and primary care services is required. More specialist care providers and housing is needed locally.

## Recommendations

- There is a need to improve understanding and knowledge about learning disability and associated conditions in carers and social care professionals.
- Seek regular feedback about DSD from people who use it so that further improvements could be made.
- Further work is required to review the DSD to provide more clarity on RAG rating.

## References

1. Learning Disability Services Monthly Statistics, AT: April 2022, MHSDS: February 2022 Final - NHS Digital. Accessed online on 20<sup>th</sup> May 2022 at <https://digital.nhs.uk/data-and-information/publications/statistical/learning-disability-services-statistics/at-april-2022-mhsds-february-2022-final#>
2. Department of Health (2012) "Transforming care: A national response to Winterbourne view hospital" Available at: [Transforming care: A national response to Winterbourne View Hospital \(publishing.service.gov.uk\)](https://www.gov.uk/government/uploads/system/uploads/attachment_data/file/130422/transforming_care_a_national_response_to_winterbourne_view_hospital.pdf) (accessed online on 17<sup>th</sup> May 2022).