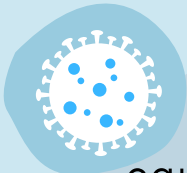


THE PROBLEM



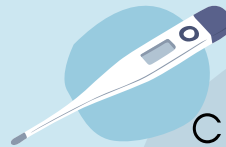
The many causes of fever causes a diagnostic challenge for doctors, and high parental anxiety



Fever is one of the most common reasons for children attending ED and ED attendance rates are rising



There has been a larger increase in ED attendances in the North West, especially in more disadvantaged areas



Children living in disadvantaged areas are more likely to develop infection and attend the ED

WHY?

Health inequalities continue to widen and are detrimental to a child's health. This research explores differences in:

Healthcare access



Access to antibiotics

Diagnostic tests performed



Parental support



Socioeconomic circumstances



Delayed presentation



FUNDED BY

NIHR | National Institute for Health and Care Research

Edge Hill University

UNIVERSITY OF LIVERPOOL

Alder Hey Children's NHS Foundation Trust