

Understanding and addressing the mental health of older adults in Colombia: The impact of stressful life events

Clarissa Giebel, Maria Isabel Zuluaga Callejas, Mark Gabbay, Frances Darlington-Pollock, Siobhan Reilly, Gabriel Saldarriaga, Ross White

Background

Colombia has suffered political violence since the 1950s, notably la violencia, and more recently drug cartel violence and forced displacement. These severely impact on the life of citizens. In addition, Colombians are now being affected by the COVID-19 pandemic. It remains unclear though how these events are affecting residents' mental health and wellbeing, particularly older adults.

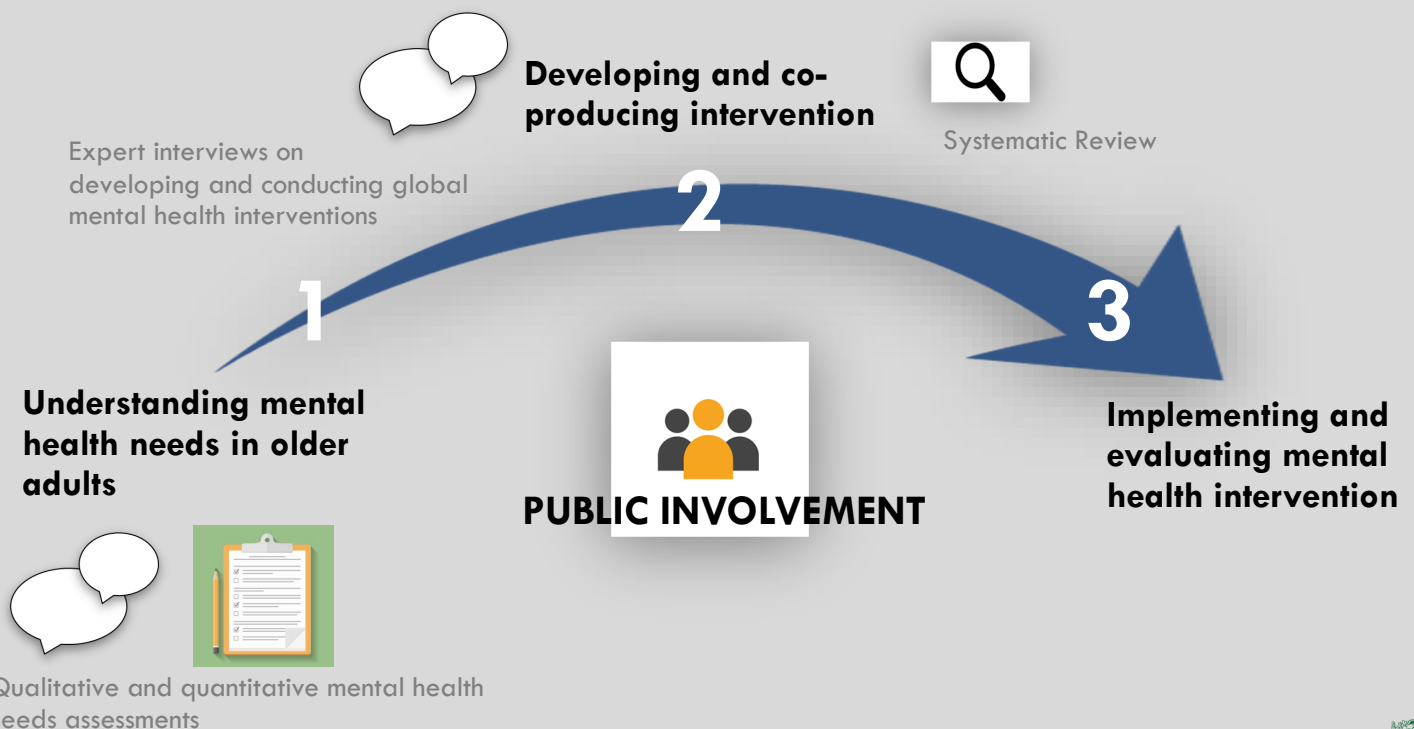


Our 3-year project (2021-2024):

AIMS

Understanding impact of historic and current interpersonal violence and the COVID-19 pandemic on the mental health of older adults

Co-producing, implementing, and evaluating a community-based mental health intervention



@ColombiaESRC_Ageing

Contact details: Clarissa.giebel@liverpool.ac.uk

