

IMPlimentation And Capacity- building Team (IMPACT)

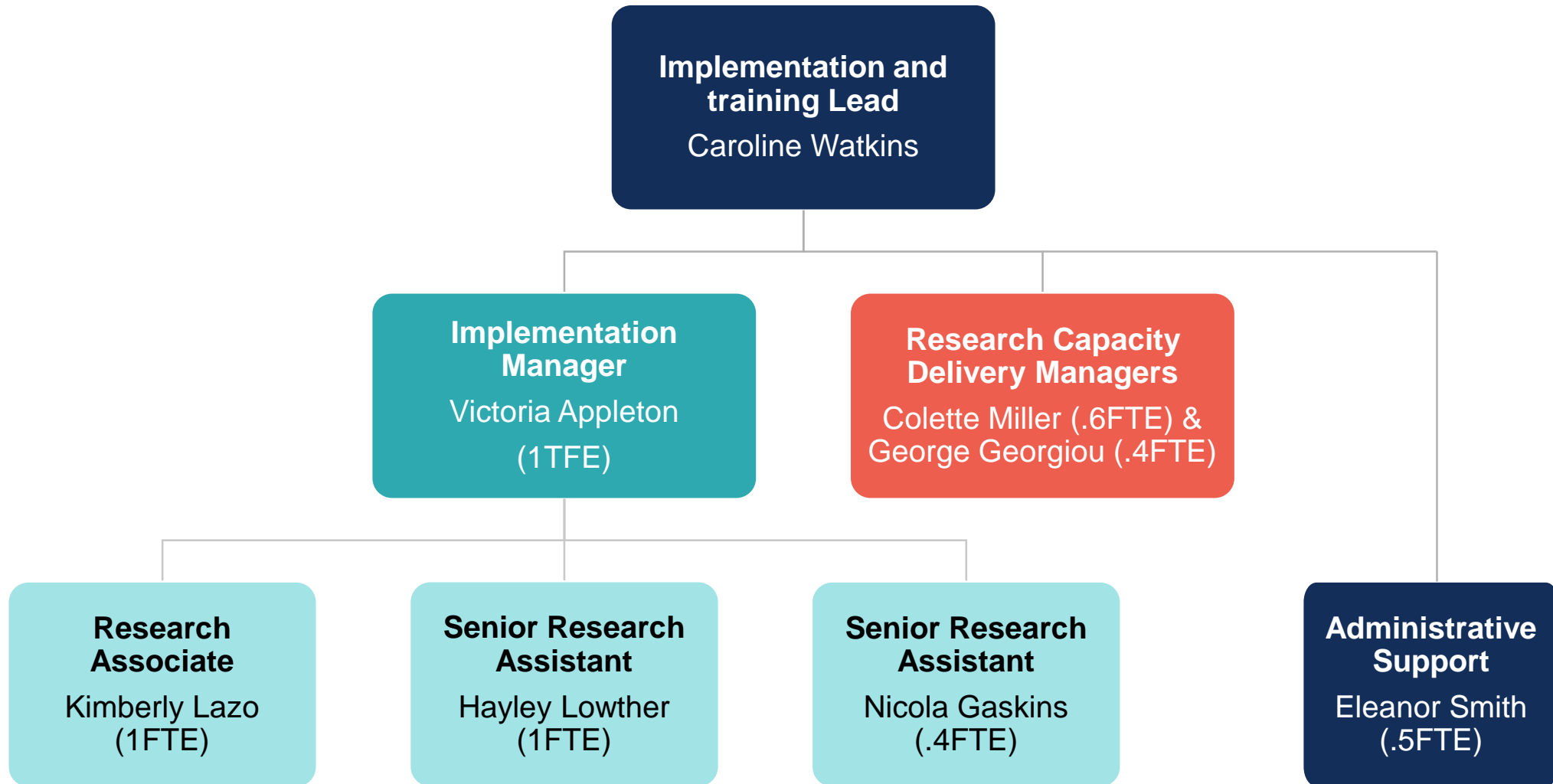


Implementation update

Kimberly Lazo, Research Associate
15th September 2020



Who are we?



NIHR ARC NWC Structure

FOUR RESEARCH THEMES

Improving Population Health (IPH)
Equitable Place Based Health and Care (EPHC)

Person-Centred Complex Care (PCCC)
Health and Care Across the Life Course (HaCAL)



CROSS-CUTTING METHODOLOGICAL SUPPORT

RESEARCH SUPPORT INFRASTRUCTURE

Methodological Innovation Development
Adaptation and Support (MIDAS)

Implementation And Capacity-building
Team (IMPACT)

Care and Health Informatics (CHI)

What does the Implementation team do?

Establish relationships
with themes and
members

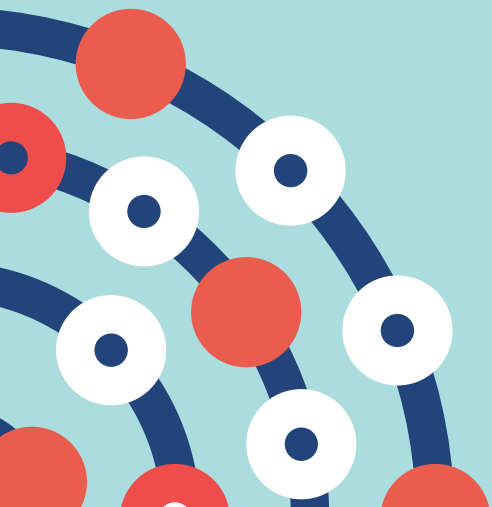
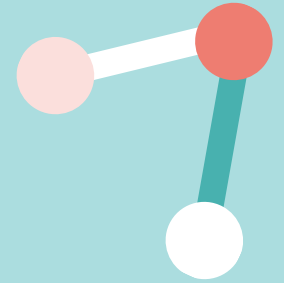
**Embed implementation
approaches** into ARC
research

Support connected
research communities

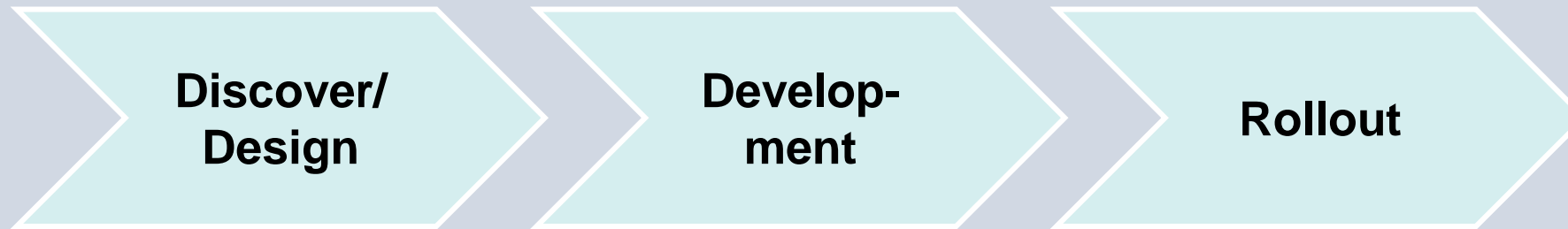
Understand
existing evidence and
potential implementation
challenges

Involve
all key stakeholders to co-
design intervention and
implementation approach

Connect
through facilitated
collaborative working w/
local networks



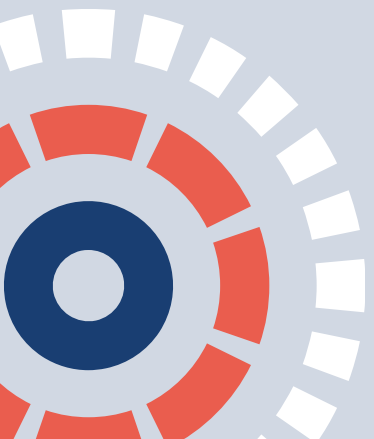
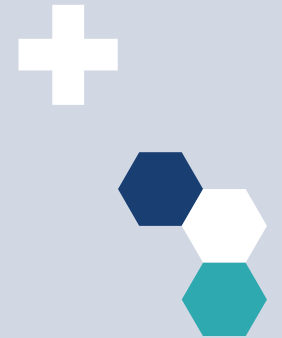
How do we support implementation?



Idea generation

Proposal development

Application for external funding



What are we currently doing?

Stroke IMPaCT Roundtable

A forum through which we can learn about efforts to implement improvements in stroke care (across NWC and nationally)

- First meeting launched 26th May 2020 attended by experts in stroke care, including clinicians, academics, public advisors, and third sector members
- Discussions about the objectives and perspectives on implementing “**integrated**” **stroke care** from both patients and professionals

Integrated Stroke Delivery Network (ISDN)

A **systematic review** to explore the barriers and facilitators of using a quality improvement collaborative to drive improvement in stroke care across multiple organisations

- In collaboration with Lancashire & South Cumbria ISDN to shape future QI activities
- Data analysis stage and initial findings to be reported back to Lancashire Teaching Hospital

What are we currently doing?

Air Quality Review

Collaborating with the EPHC Theme to complete a **review of the approaches** used to engage communities in air quality plans and actions

- Emerging findings to be presented in the EPHC theme meeting this afternoon

Complex regional pain syndrome (CRPS)

Working with colleagues from Royal Liverpool NHS Trust and The Walton Centre in developing an intervention to prevent CRPS

- A **review of existing guidelines** for CRPS in order to determine care pathways
- To develop a programme of research and **work packages** to understand barriers and facilitators to implementation

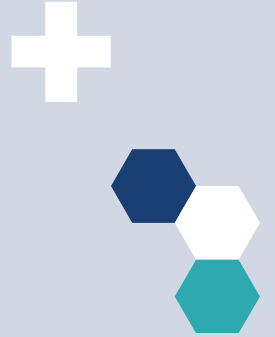
What are we currently doing?

Oral Care in Care Homes

Identifying the barriers & facilitators to implementing the **Mouth Care Matters programme** in Cheshire & Merseyside

- A **systematic review** on the effectiveness of implementation strategies in oral care for older people in care home settings
- A future **evaluation** of the programme in care homes across Cheshire & Merseyside to explore what could have been done differently as a response to Covid-19
 - Grant application submitted to Research Capability Funding Liverpool CCG to support this

What are our next steps?

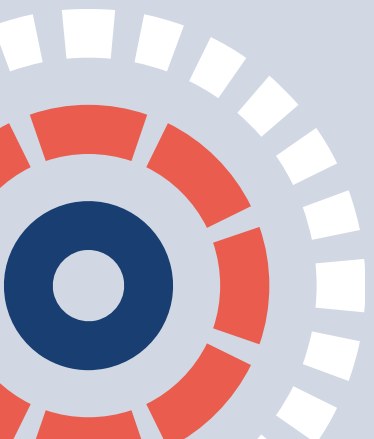


Next **Stroke IMPaCT Roundtable** in October

Completion of the reviews and dissemination of the findings from **ISDN**, **Air Quality Improvement** and **Oral Care for Care Homes**

Working with **Innovation Agency** in developing their pipeline

Applying the **Roundtable model** to other programmatic areas



Contact us

IMPACT, ARCNWC-IMPACT@uclan.ac.uk

Kimberly Lazo, klazo@uclan.ac.uk

Hayley Lowther, hlowther@uclan.ac.uk

Nicola Gaskins, ngaskins@uclan.ac.uk

